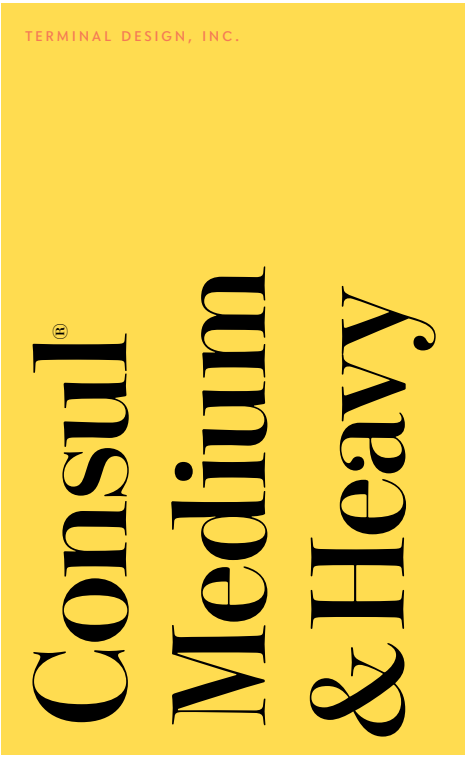
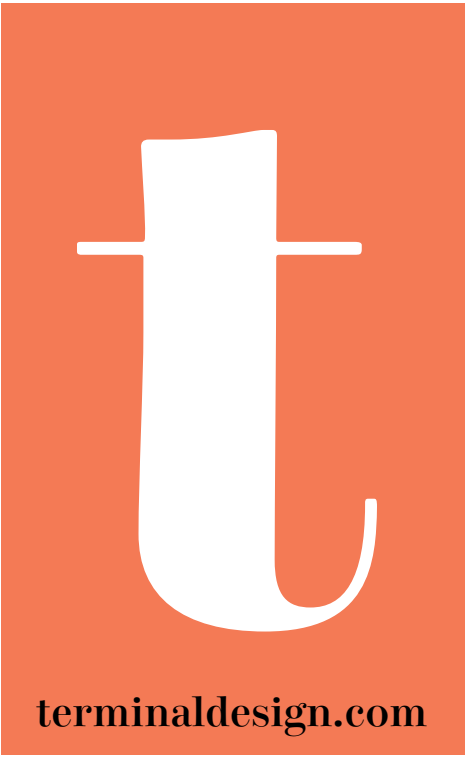


THERE IS A TIME IN EVERY MAN'S EDUCATION WHEN HE ARRIVES AT THE CONVICTION
that envy is ignorance; that imitation is suicide; that he must take himself for better,
for worse, as his portion; that though the wide universe is full of good, no kernel
of nourishing corn can come to him but through his toil bestowed on that plot of ground
which is given to him to till. The power which resides in him is new in nature, and none
but he knows what that is which he can do, nor does he know until he has tried. Not for
nothing one face, one character, one fact, makes much impression on him, and another
none. This sculpture in the memory is not without preëstablished harmony. The eye
was placed where one ray should fall, that it might testify of that particular ray. We but
half express ourselves, and are ashamed of that divine idea which each of us rep-
resents. It may be safely trusted as proportionate and of good issues, so it be faithfully
imparted, but God will not have his work made manifest by cowards. A man is relieved
and gay when he has put his heart into his work and done his best; but what he has said or
done otherwise shall give him no peace. It is a deliverance which does not deliver. In the
attempt his genius deserts him; no muse befriends; no hope, no invention, no hope. **Trust thyself:**
every heart vibrates to that iron string. Accept the place the divine providence has
found for you, the society of your contemporaries, the connection of events. Great men
have always done so, and confided themselves childlike to the genius of their age, betray-
ing their perception that the absolutely trustworthy was seated at their heart, working
through their hands, predominating in all their being. And we are now men, and must
accept in the highest mind the same transcendent destiny; and not minors and invalids

CONSUL MEDIUM TEXT, 9/13 PT



Consul

CONSUL MEDIUM DISPLAY

Consul

CONSUL MEDIUM ITALIC DISPLAY

Consul

CONSUL HEAVY DISPLAY

Consul

CONSUL HEAVY ITALIC DISPLAY

Display. These faces are the elegant older siblings of the type family. Designed for use at large sizes (24 point and above), they have more refined contrast between thick and thin strokes, slightly tighter spacing, and careful kerning.

Consul

CONSUL MEDIUM DECK

Consul

CONSUL MEDIUM ITALIC DECK

Consul

CONSUL HEAVY DECK

Consul

CONSUL HEAVY ITALIC DECK

Deck. In magazine design, a subtitle is called a “deck”. A deck face is a hybrid of the display and text designs—slightly more refined than text, but weighted enough withstand setting at sizes smaller than display. Deck sizes are normally 14–24 points.

Consul

CONSUL MEDIUM TEXT

Consul

CONSUL MEDIUM ITALIC TEXT

Consul

CONSUL HEAVY TEXT

Consul

CONSUL HEAVY ITALIC TEXT

Text. Text type is the workhorse of the type family. Designed for use at sizes 9–14 points, they are less refined than display or deck faces, but perfectly suited to their task of facilitating extended reading.

Consul

CONSUL MEDIUM CAPTION

Consul

CONSUL MEDIUM ITALIC CAPTION

Consul

CONSUL HEAVY CAPTION

Consul

CONSUL HEAVY ITALIC CAPTION

Caption. Caption type is designed for use at very small sizes (6–8 points). Loose spacing, reduced contrast between thick and thin, and other design modifications provide increased legibility for tiny type.

ABCDEFGHIJKLMNOPQRSTUVWXYZ
abcdefghijklmnopqrstuvwxyz
1234567890

ABCDEFGHIJKLMNOPQRSTUVWXYZ
OPQRSTUVWXYZ
abcdefghijklmnopqrstuvwxyz
1234567890

CONSUL

CONSUL HEAVY CAPTION, TEXT, BOLD, & DISPLAY

Terminal Design, Inc.
125 Congress Street
Brooklyn, NY 11201
(T) 718.246.7069
(F) 718.246.7085
(E) info@terminaldesign.com
terminaldesign.com

Consul Medium
Consul Medium Italic
Consul Heavy
Consul Heavy Italic

ABCDEFGHIJKLMNOPQRSTUVWXYZ
OPQRSTUVWXYZ
abcdefghijklmnopqrstuvwxyz
1234567890

ABCDEFGHIJKLMNOPQRSTUVWXYZ
OPQRSTUVWXYZ
abcdefghijklmnopqrstuvwxyz
1234567890

OBSERVE, I DO NOT MEAN TO SUGGEST THAT THE CUSTOM OF LYING HAS SUFFERED ANY DECAY OR INTERRUPTION—NO, FOR THE LIE, AS A VIRTUE, A PRINCIPLE, IS ETERNAL; THE LIE, AS A RECREATION, A SOLACE, A REFUGE IN TIME OF NEED, THE FOURTH GRACE, THE TENTH MUSE, MAN'S BEST AND SUR-EST FRIEND, IS IMMORTAL, AND CAN-NOT PERISH FROM THE EARTH WHILE THIS CLUB REMAINS. MY COMPLAINT SIMPLY CONCERNS THE DECAY OF THE ART OF LYING. NO HIGH-MINDED MAN, NO MAN OF RIGHT FEELING, CAN CONTEM-PLATE THE LUMBERING AND SLOVENLY LYING OF

All things are double, one against another. Tit for tat; an eye for an eye; a tooth for a tooth; blood for blood; mea-

CONSUL MED. TEXT, 12 PT

All things are double, one against another. Tit for tat; an eye for an eye; a tooth for a tooth; blood for

CONSUL HEAVY TEXT, 12 PT

All things are double, one against another. Tit for tat; an eye for an eye; a tooth for a tooth; blood for blood;

CONSUL MED. ITALIC TEXT, 12 PT

All things are double, one against another. Tit for tat; an eye for an eye; a tooth for a tooth; blood

CONSUL HEAVY ITALIC TEXT, 12 PT

UNDER A GOVERNMENT WHICH IMPRISONS unjustly, the true place for a just man is also a prison. Unjust laws exist: shall we be content to obey them, or shall we endeavor to amend them, and obey them until we have succeeded, or shall we transgress them at once? Men, generally, under such a government as this, think that they ought

CONSUL MEDIUM CAPTION, 7 PT

UNDER A GOVERNMENT WHICH IMPRISONS unjustly, the true place for a just man is also a prison. Unjust laws exist: shall we be content to obey them, or shall we endeavor to amend them, and obey them until we have succeeded, or shall we transgress them at once? Men, generally, under such a government as this,

CONSUL HEAVY CAPTION, 7 PT

Under a government which imprisons unjustly, the true place for a just man is also a prison. Unjust laws exist: shall we be content to obey them, or shall we endeavor to amend them, and obey them until we have succeeded, or shall we transgress them at once? Men, generally, under such a government as this, think that they ought

CONSUL MED. ITALIC CAPTION, 7 PT

Under a government which imprisons unjustly, the true place for a just man is also a prison. Unjust laws exist: shall we be content to obey them, or shall we endeavor to amend them, and obey them until we have succeeded, or shall we transgress them at once? Men, generally, under such a government as this,

CONSUL HEAVY ITAL CAPTION, 7 PT

TERMINALDESIGN.COM

CONSUL MEDIUM CAPTION, TEXT, BOLD, & DISPLAY